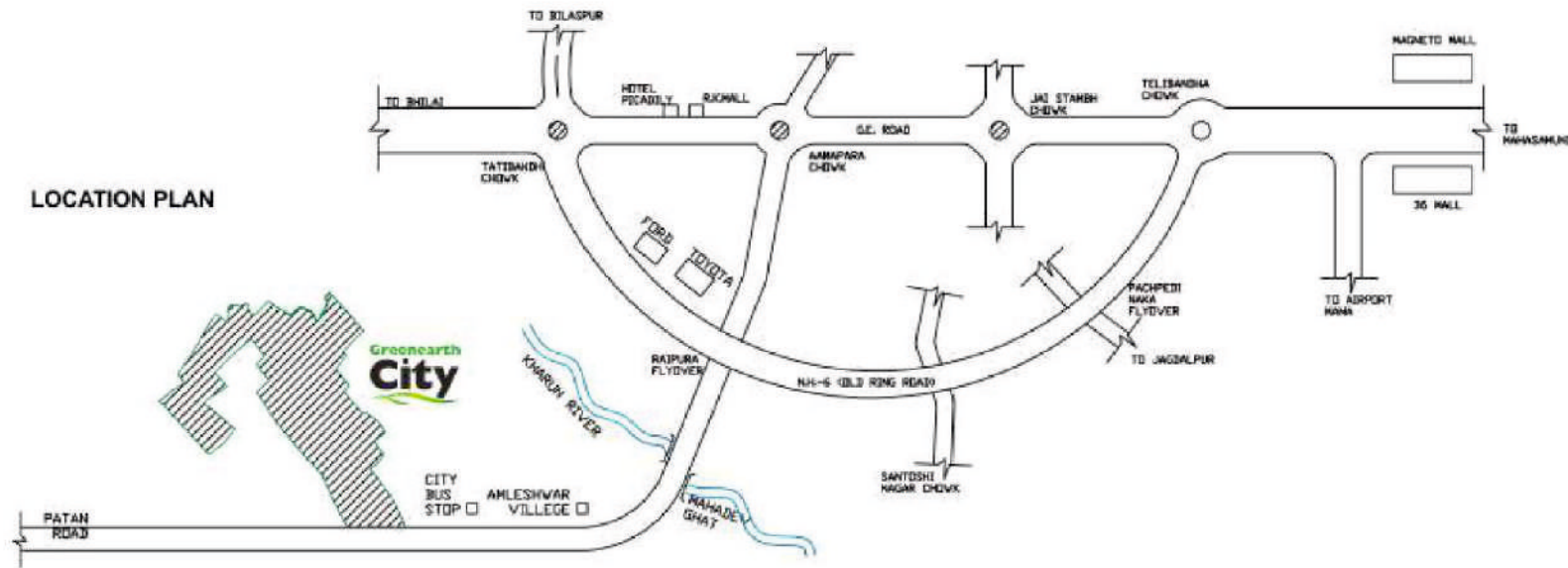


CONNECTIVITY

CITY OF CONVENIENT CONNECTIVITY



DISTANCE

| | |
|--------------------------|-----------|
| ● Tatibandh Chowk | - 15 mins |
| ● Telibandha | - 20 mins |
| ● Pachpedi Naka | - 10 mins |
| ● School | - 10 Mins |
| ● Hospital | - 05 mins |
| ● College | - 10 mins |
| ● Airport | - 30 Mins |
| ● ISBT Bus Station | - 15 mins |
| ● Raipur Railway Station | - 20 mins |
| ● Colors Mall | - 15 mins |

Disclaimer : Visual photographs, elevations shown in this brochure are artistic impressions. All the layout plans, drawings and distances are not to scale.



PCGRERA200618000246 | PCGRERA2000618000244

● Near By Mahadev Ghat , Raipur (C.G.) ☎ 98737 78115



RERA No.: PCGRERA200618000246 | PCGRERA2000618000244

FOLLOW US ON: ☎ 98737 78115

मोर जमीन, मोर मकान

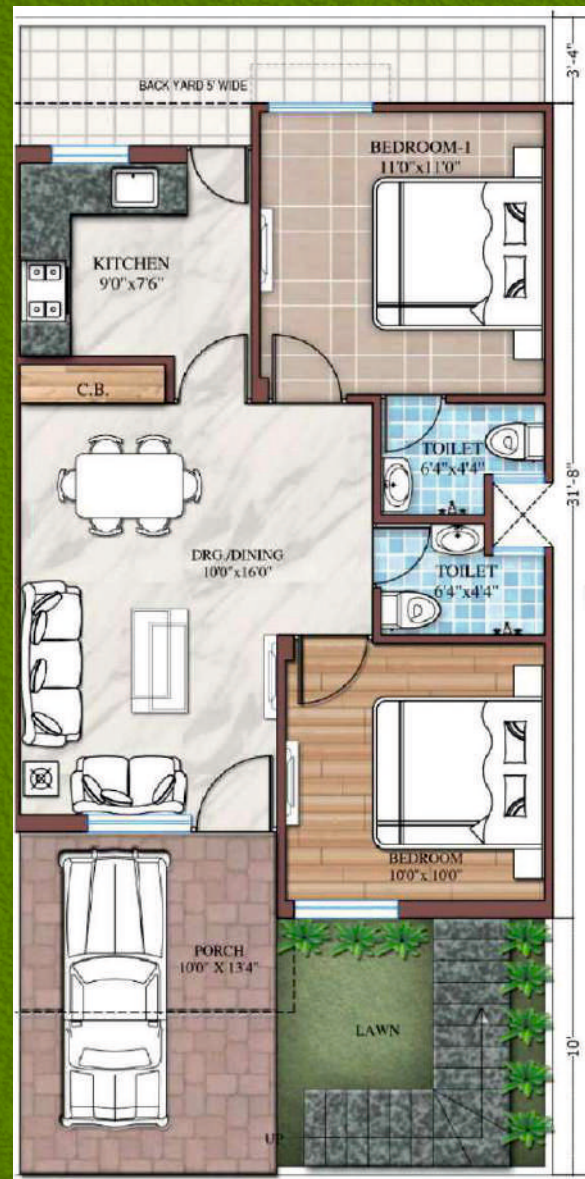
A City of Wealth, Growth, Happiness & Prosperity

GREENEARTH CITY ही क्यों? ऐसा क्या है यहाँ

- क्षेत्र का एक मात्र 42 एकड़ का मेगा टाउनशिप प्रोजेक्ट जहाँ आपके लिए है आवासीय/व्यापारिक एवं मनोरंजन व खेलकूद के सभी सुविधाजनक साधन।
- भारत माला रोड से जोड़ने वाली 150 फीट चौड़ी पाटन रोड पर स्थित सर्वसुविधा युक्त कैम्पस।
- मेन रोड पर भव्य प्रवेश द्वार के साथ ही रायपुर का इकलौता परिसर जहाँ की सड़कें 100 फीट तक चौड़ी हैं।
- प्रदूषण मुक्त, रायपुर शहर का सबसे हरा भरा क्षेत्र
- बेहतरीन कनेक्टिविटी, सभी मार्केट/हॉस्पिटल, स्कूल, रिक्रिएशन पार्क, रेल्वे स्टेशन, रेस्टोरेंट इत्यादि के एकदम नज़दीक ।
- परिसर में ही रोजमर्रा की जरूरतों के सभी साधन।
- अपने प्रतिस्पर्धी अन्य परियोजनाओं की तुलना में सबसे उचित दरें ।



GROUND FLOOR PLAN



GOLD



PLATINIUM

AMENITIES -CITY OF ENTERTAINMENT



INDOOR GAMES

Chess | Carrom | Card Games | Ludo | Table Tennis | Pool Table | Billiards



OUTDOOR GAMES

Badminton | Football | Volleyball | Cricket | Basketball



GYM

With all Modern Equipment & Facilities



GRAND TEMPLE



SPECIFICATIONS

- | | | | |
|-------------|--|---------------------|--|
| ◆ Structure | : R.C.C. Framed | ◆ Water Supply | : Concealed CPVC pipelines with standard quality fittings |
| ◆ Walls | : Brick Masonry , common walls 8" thick remaining walls 4" thick. | ◆ Electrification | : Concealed copper wiring with modular switches ABD circuit security MCBs. |
| ◆ Flooring | : Vitrified Tiles in Drawing/Dining , Bedroom & Kitchen , Antiskid Tiles in Toilets & Balcony. | ◆ Internal Painting | : OBD on internal walls with putty finish and POP cornice in Drawing and Dining |
| ◆ Toilets | : Designer ceramic Tiles in dado upto 7' height with matching sanitary wares & C.P. fittings of standard make(W.C. dado 4' ht.). | ◆ External Painting | : Acrylic emulsion paint on all external walls |
| ◆ Kitchen | : Green Marble Platform with steel sink and designer tiles in dado upto 2'ht. above platform. | ◆ Utility Points | : AC point in master bedroom and cooler point in drawing and dining washing machine point in wash area and geyser point in Toilet cable , TV and phone point in Drawing/Master Bedrooms provision for Aquaguard , Refrigerator and power points in kitchen |
| ◆ Doors | : Salwood frames and flush doors. | ◆ Loft | : Loft in Kitchen |
| ◆ Windows | : Power coated aluminium section with Glass and MS Grill. | | |

LAYOUT

